

FK FRIGO KING

Flexibility | Durability | Technology



FLEX
S E R I E S

The new Flex series is yet more flexible, introducing a wide range of equipments, more technology and versatility.

Engineered for small-to-medium sized delivery vehicles, as vans and small refrigerated trucks, that requires high performance in any route.

Safety, technology, flexibility, and efficiency for agile, economical, and smooth refrigerated transport.



**Flexibility.
Durability.
Technology.**

Ideal for small-to-medium sized delivery vehicles.

Flex series is ideal choice for small-to-medium sized delivery vehicles, as vans and small refrigerated trucks, providing all the flexibility necessary for efficiency and agility for the transportation of fresh or frozen goods with lightweight but reinforced and resistant structure.



Results With efficiency and flexibility

When your company results are in the topic, we are sure that Flex series is the best option. Offering flexibility, economy, reduced environmental impact and the technology that customer demands. Choose a reliable equipment for increase efficiency to your urban delivery.

NO MATTER WHAT'S YOUR BUSINESS, WE HAVE AN IDEAL FLEX FOR YOU!

Do your clients demand adaptation capacity? We offer a system as flexible as your business. Choose over a wide range of models frontal or roof mounted, for fresh or frozen products application.

EASY, FAST AND LOW COST INSTALLATION

Service for Flex series is uncomplicated, inexpensive and may be done easily for any experienced technician, who counts with our corporate training program to support to reach the best.



YOUR LOAD WITH LOW OPERATING COSTS

Flex series offers high performance and high efficiency products for low maintenance cost temperature control.

MY FRIGO KING TECHNOLOGY: THE CONTROL IN THE PALM OF YOUR HANDS

My FRIGO KING exclusive application provides real time information of your equipment, in the palm of your hand or in your desktop, no upfront payment or monthly fee. Your truck stays longer on the road with information, technology, easy maintenance and real saving.

SUPER HEAVY DUTY PHILOSOPHY MORE TIME ON THE ROUTE

Understanding the challenges of this market is what makes the Super Heavy-Duty Philosophy the difference when choosing your Frigo King equipment, our job is to solve your problem, that's why we don't negotiate when it comes to quality and responsible maintenance. We understand that for your truck to stay longer on the road, it was necessary for our engineers to go beyond offering durability and quality through the best parts but combine it with availability anywhere in the world and simplicity of use.

Standard Durability

For enhanced compressor life, oil separator is standard for MAX versions. Every single component, from the core (compressor, fans, hose) to control is Super Heavy-Duty. Quality on the highlights, and best in class components inside.

Light design, compact and robust structure



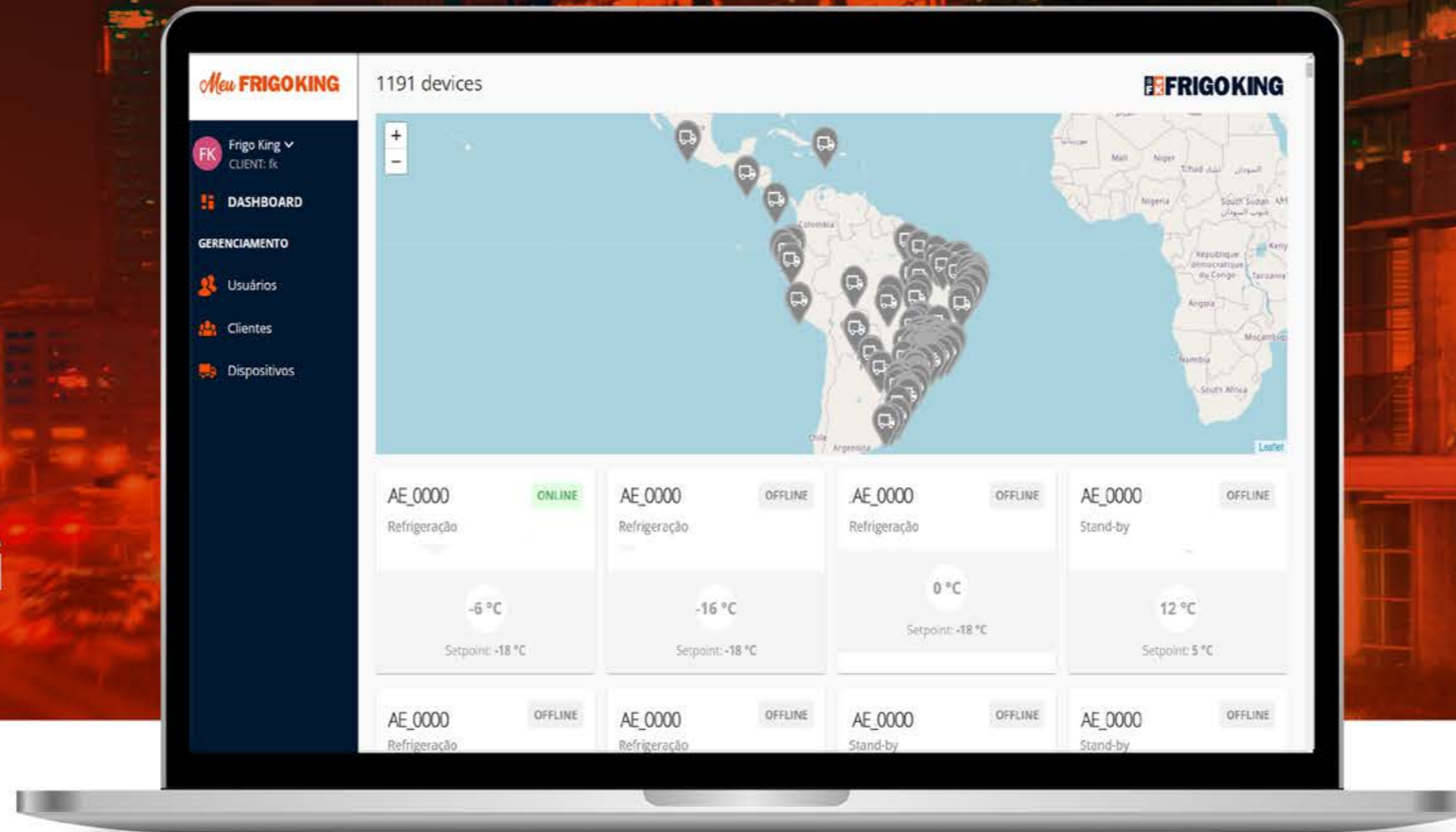
REFRIGERATION SYSTEM

The refrigeration system uses a direct mounted compressor* and an electric mounted for stand by operation (only "plus" model). It is also available MAX versions with extra cooling capacity. *except for EPS models (for EV).

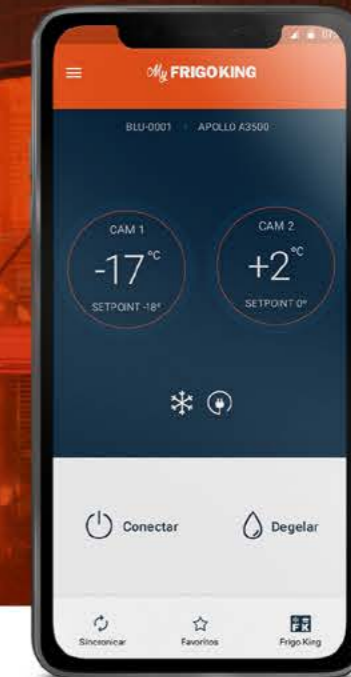
For EV with power outlet, Flex SRX EPS and Flex SRX Max EPS are available under request.

Exclusive Technology that Drives Your Business: My Frigo King App and Platform

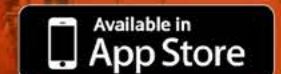
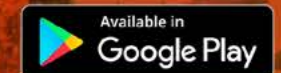
My FRIGOKING



Invest in your success. Invest in Frigo King.



Exclusive technology



TOTAL CONTROL, IN THE PALM OF YOUR HAND AND ON YOUR COMPUTER SCREEN

Frigo King goes beyond refrigeration, offering cutting-edge technology to optimize your operation and provide the peace of mind you deserve. With the My Frigo King app and platform, you have access to a complete set of features that will revolutionize the management of your refrigerated transport.

MY FRIGO KING APP: FREE AND WITH NO MONTHLY FEES

Whether on your mobile phone or computer, My Frigo King puts fleet control at your fingertips. With it, you can access real-time information, monitor cargo temperature, control defrosting, and much more, all in an intuitive and practical way.

FEATURES THAT DRIVE YOUR BUSINESS:

REMOTE TEMPERATURE ADJUSTMENT:

Ensure cargo integrity with precise control, even during transport.

DEFROST CONTROL:

Optimize equipment operation and avoid interruptions.

TEMPERATURE HISTORY:

Access detailed records for analysis and proof of transport quality.

TRUCK LOCATION:

Track the exact position of your vehicles and cargo in real-time, providing greater security and predictability.

DELIVERY ASSESSMENT:

Analyze delivery times, stops, and driving practices to improve your processes.

MANAGER AND DRIVER INTEGRATION:

Efficient communication integrated with WhatsApp for faster and safer transport.

FREE TRAINING: Train your team to get the most out of the platform and equipment..

MY FRIGO KING PLATFORM: EXPAND YOUR VISION, OPTIMIZE YOUR BUSINESS

With the computer version of My Frigo King, you take fleet management to a new level. Get a comprehensive view of your business by tracking the performance of your equipment and deliveries, even when they are off-site.

ALL THIS WITH THE SECURITY AND RELIABILITY OF THE CLOUD.

Your data is stored securely and accessible from anywhere, anytime.



AND THE BEST PART: ALL THIS TECHNOLOGY IS FREE AND COMES STANDARD ON ALL FRIGO KING EQUIPMENT.

Unlock all potential of your Flex with our Corporate Training Program

FREE training for managers, drivers, buyers, and technical assistance. It is knowledge that supports to save money on fuel, maintenance and increase the quality of service. For our partners, we offer commercial develop to support the client how to choose the best equipment according to the situation.



Always choose
ORIGINAL
FRIGO KING PARTS

Every little detail of Frigo King products is designed so that your truck stays longer on the road. It's not just about choosing the best components, but about a non-negotiable commitment to quality. It's our SUPER HEAVY DUTY philosophy!





FLEX EPS

ENERGY EFFICIENCY FOR SUSTAINABLE BUSINESS

In recent years, concern about the future of fossil fuel use in vehicles has increased, the search for alternatives has grown, and the electric solution has been well accepted by the market. Frigo King is attentive to trends and, as part of the ESG good practices system as a supplier, has put engineering to develop products and solutions that can serve vehicles with energy efficiency.

We created the FLEX SRX EPS, equipment for trucks with an electric motor. We are 100% connected to the ESG concept, care for the environment, people and sustainability.

*My Frigo King technology is not available for the EPS line



Energy Efficiency



Sustainable Future



Care for people and the environment



Connected with the ESG concept





Specifications

EQUIPMENT	FLEX S		FLEX S MAX		FLEX SR		FLEX SR MAX		FLEX SRX		FLEX SRX PLUS		FLEX SRX MAX		FLEX SRX MAX PLUS		FLEX ULTRA MAX		FLEX SRX EPS		
COOLING CAPACITY - PERFORMANCE																					
Return Temperature	2°C	-18°C	2°C	-18°C	2°C	-18°C	2°C	-18°C	2°C	-18°C	2°C	-18°C	2°C	-18°C	2°C	-18°C	2°C	-18°C	2°C	-18°C	
Watt (W)	1761	N/A	2110	1120	2255	N/A	2785	1520	2978	N/A	2978	N/A	3345	1850	3345	1850	4520	3160	2978	N/A	
BTU/h	6004	N/A	7194	3818	7688	N/A	9495	5182	10153	N/A	10153	N/A	11404	6307	11404	6307	15410	10774	10153	N/A	
AIR FLOW - SHD Fans																					
Condensing Unit (m³/h)	1400m³/h à 10mmca		1400m³/h à 10mmca		1400m³/h à 10mmca		1400m³/h à 10mmca		1400m³/h à 10mmca		1400m³/h à 10mmca		1400m³/h à 10mmca		1400m³/h à 10mmca		2800m³/h à 10mmca		1400m³/h à 10mmca		
Evaporator Unit (m³/h)	620m³/h à 10mmca		620m³/h à 10mmca		1240m³/h à 10mmca		1240m³/h à 10mmca		1240m³/h à 10mmca		1240m³/h à 10mmca		1240m³/h à 10mmca		1240m³/h à 10mmca		3720m³/h à 10mmca		1240m³/h à 10mmca		
WEIGHT																					
Condensing Unit (kg)	19,5		20		20		20		19,5		68		20		69		42		68		
Evaporator Unit (kg)	10		10		15		15		19		19		19		19		27		19		
SUPER HEAVY DUTY COMPRESSOR																					
Model	FK7H15																				
Compressor Type	Compressor à pistão																				
Maximum Rotation (RPM)	6000																				
Number of Pistons	7																				
Voltage(Dc)	12/24																				
Displacement (cm³)	154,7																				
Crankcase Capacity (ml)	200																				
ELECTRICAL DATA																					
Current in 380V (50Hz)(A)	N/A	N/A	N/A	N/A	N/A	N/A	N/A	N/A	N/A	N/A	5,0	N/A	N/A	N/A	N/A	N/A	N/A	N/A	N/A	NA	
Current in 220V (A) - Single-phase	N/A	N/A	N/A	N/A	N/A	N/A	N/A	N/A	N/A	N/A	N/A	N/A	N/A	N/A	N/A	N/A	N/A	N/A	N/A	N/A	
Current in 220V (A)	N/A	N/A	N/A	N/A	N/A	N/A	N/A	N/A	N/A	N/A	8,0	N/A	8,0	N/A	8,0	N/A	8,0	N/A	8,0	8,0	
Current in 380V (A)	N/A	N/A	N/A	N/A	N/A	N/A	N/A	N/A	N/A	N/A	5,0	N/A	5,0	N/A	5,0	N/A	5,0	N/A	5,0	5,0	
Current in 12Vcc (A)	26,5	26,5	35	35	35	35	35	35	35	35	35	35	35	35	35	35	45	45	35	35	
Current in 24Vcc(A)	11	11	15	15	15	15	15	15	15	15	15	15	15	15	15	15	35	35	15	NA	
Current in 24Vcc(A) (50Hz)	N/A	N/A	N/A	N/A	N/A	N/A	N/A	N/A	N/A	N/A	19,5	N/A	19,5	N/A	19,5	N/A	19,5	N/A	19,5	NA	
Electric Vehicle Voltage (Vcc)	NA	NA	NA	NA	NA	NA	NA	NA	NA	NA	NA	NA	NA	NA	NA	NA	NA	NA	NA	500 - 650	
Voltage / Phase / Frequency	N/A	N/A	N/A	N/A	N/A	N/A	N/A	N/A	N/A	N/A	220 / 3 / 60 380 / 3 / 60 220 / 3 / 50 380 / 3 / 50	N/A	220 / 3 / 60 380 / 3 / 60 220 / 3 / 50 380 / 3 / 50	N/A	220 / 3 / 60 380 / 3 / 60 220 / 3 / 50 380 / 3 / 50	N/A	220 / 3 / 60 380 / 3 / 60 220 / 3 / 50 380 / 3 / 50	N/A	220 / 3 / 60 380 / 3 / 60 220 / 3 / 50 380 / 3 / 50		
REFRIGERANT																					
Refrigerant HFC	R134a		R404A		R134a		R404A		R134a		R134a		R404A		R404A		R404A		R134a		
Charge (Kg)	1,0		0,9		1,0		0,9		1,0		1,1		0,75		0,9		1,0		1,0		

FROST	By time	With drip time
	By time and temperature	With pre-cooling
	With hot gas	





Choose the best FLEX for you

				2M	2,8M	3,5M	4,2M	5M
FLEX SERIES	Model	Fluid	Isolation	4m ³	8m ³	12m ³	16m ³	20m ³
	Flex S	R134a	50mm	até - 8°C	até 0°C	até +10°C	até +18C	NA
			75mm	até -10°C	até -5°C	até +8°C	até +15°C	NA
			100mm	até -12°C	até -8°C	até +5°C	até +12°C	NA
	Flex S Max	R404A	50mm	NA	NA	NA	NA	NA
			75mm	-5°C até -12°C	-5°C até -8°C	NA	NA	NA
			100mm	-5°C até -18°C	-5°C até -12°C	NA	NA	NA
	Flex SR	R134a	50mm	até -12°C	até -8°C	até -0°C	até +10°C	até +18°C
			75mm	até -15°C	até -10°C	até -5°C	até +8°C	até +15°C
			100mm	até -15°C	até -12°C	até -8°C	até +5°C	até +12°C
Flex SR Max	R404A	50mm	N/A	NA	NA	NA	NA	
		75mm	-5°C até -18°C	-5°C até -18°C	-5°C até -8°C	NA	NA	
		100mm	-5°C até -18°C	-5°C até -18°C	-5°C até -12°C	NA	NA	
Flex SRX Flex SRX Plus Flex SRX EPS	R134a	50mm	até -15°C	até -10°C	até -8°C	até -5°C	até 0°C	
		75mm	até -15°C	até -12°C	até -10°C	até -8°C	até -3°C	
		100mm	até -15°C	até -15°C	até -12°C	até -10°C	até -5°C	
Flex SRX Max Flex SRX Max Plus	R404A	50mm	NA	NA	NA	NA	NA	
		75mm	-5°C até -18°C	-5°C até -18°C	-5°C até -15°C	-5°C até -10°C	NA	
		100mm	-5°C até -18°C	-5°C até -18°C	-5°C até -18°C	-5°C até -15°C	NA	
Flex Ultra Max	R404A	50mm	NA	NA	NA	NA	NA	
		75mm	NA	NA	NA	-5°C a -15°C	-5°C a -12°C	
		100mm	NA	NA	NA	-5°C a -18°C	-5°C a -15°C	

- The cab-in control is standard locked minimum temperature at -18°C (0°F).
- Considering the product loaded in the same temperature for transport.
- Approximate values and variations may occur according to refrigerated body, product, and operation.
- Minimum isolation of 120 mm (5 inches) on the floor, 100 mm (4 inches) on the roof, no door opening.
- It is considered the use of polyurethane density 36 to 40 (kg/m³).

Measures



Models:

Flex S

Flex S Max

Flex SR

Flex SR Max

Flex SRX

Flex SRX Max

Measures

Models:

Flex SRX Max Plus

Flex SRX Plus

Flex SRX EPS

281mm

11,06in



Model:

Flex Ultra Max

281mm

11,06in



Measures

Models:

- Flex SRX**
- Flex SRX Max**
- Flex SRX Max Plus**
- Flex SRX Plus**
- Flex SRX EPS**



Models:

- Flex S**
- Flex S Max**



Models:

- Flex SR**
- Flex SR Max**

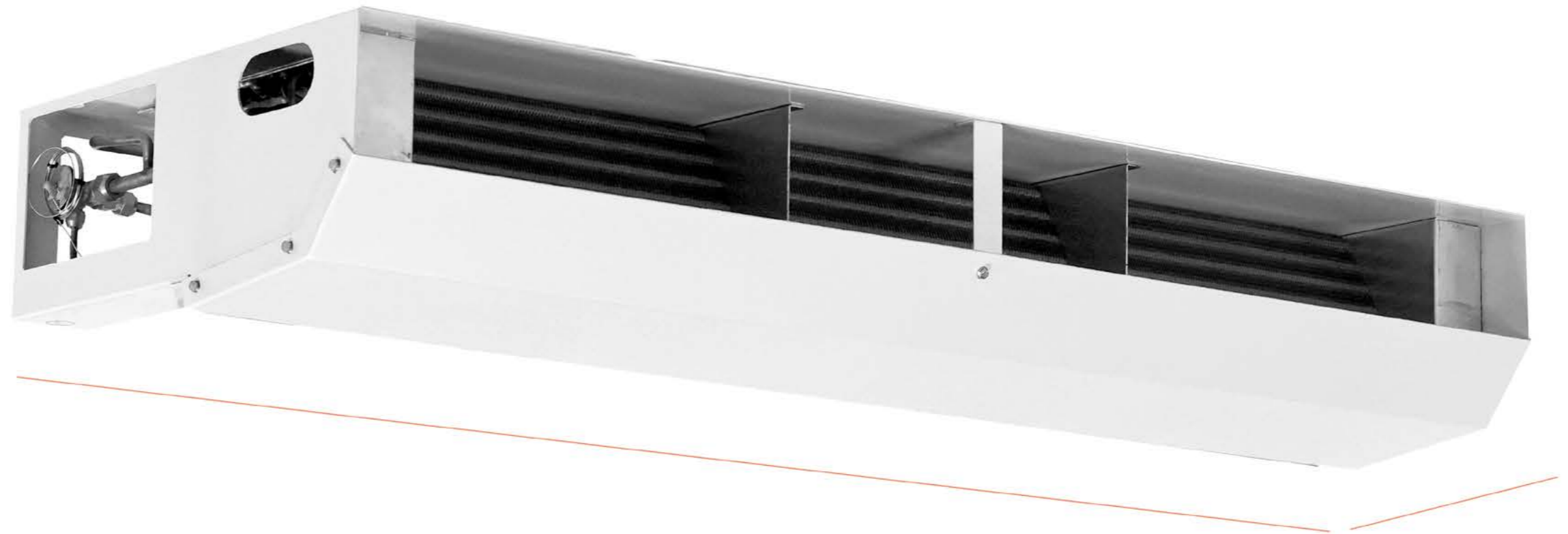


Measures

Model:

Flex Ultra Max
Constructed in
aluminum

215mm
8,46in



1288mm
50,71in

545mm
21,46in



FRIGO KING

Frigo King is a Brazilian company built over the durability, quality, and reliability pillars to offer products with technology, low maintenance and truck longer in route. It is not only principles, but a true philosophy we call SUPER HEAVY DUTY, with work and engineering focused in whom works hard for the success.